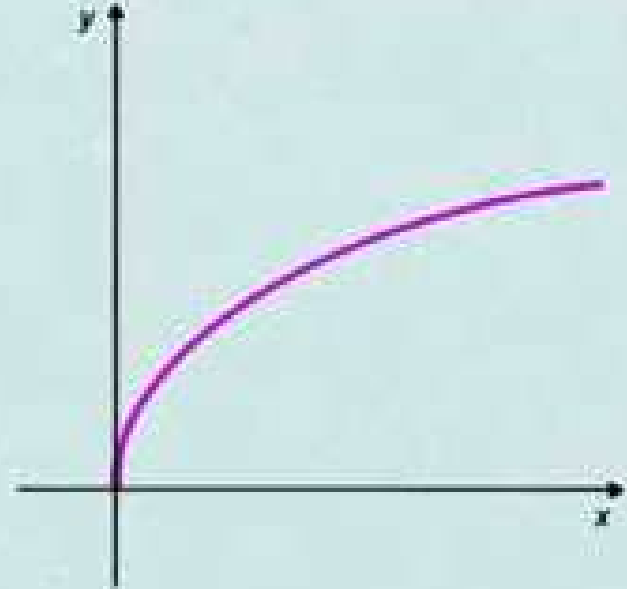
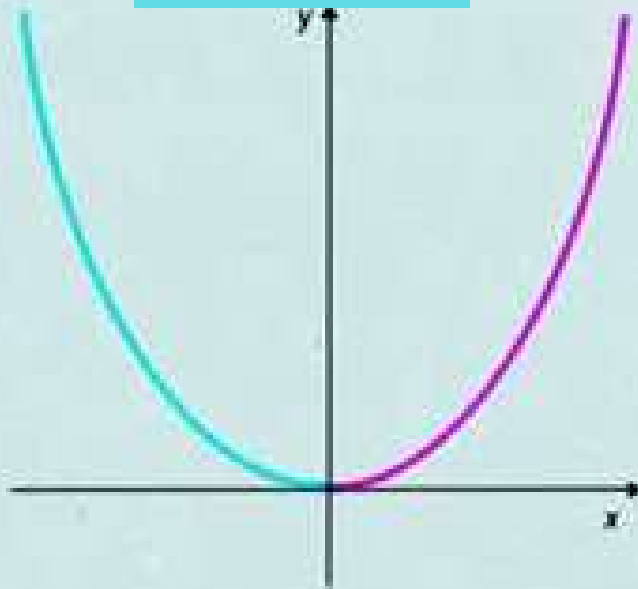


# *Grafici di funzioni elementari e delle loro funzioni inverse*

$n$  pari

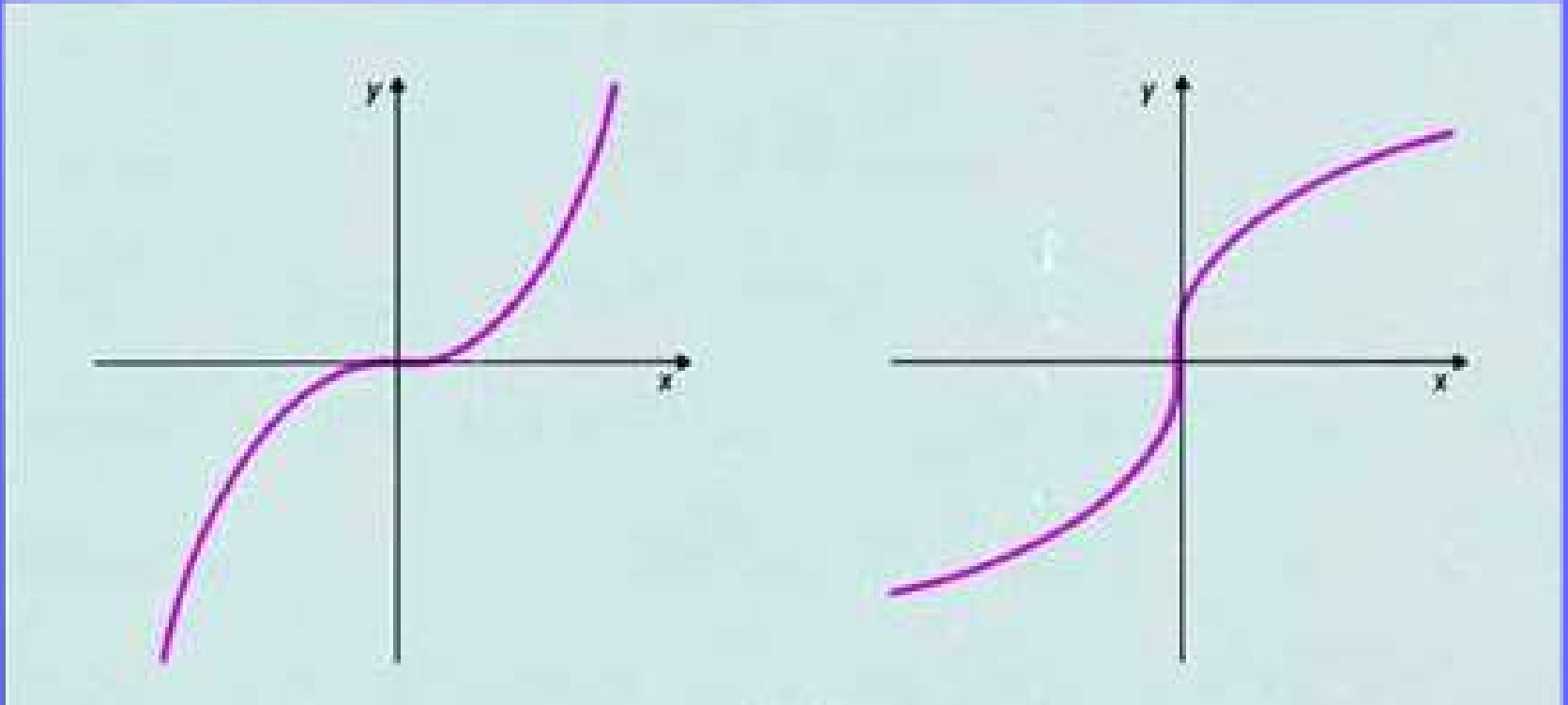
non iniettiva



$$y = x^n$$

$$y = \sqrt[n]{x}$$

$n$  dispari

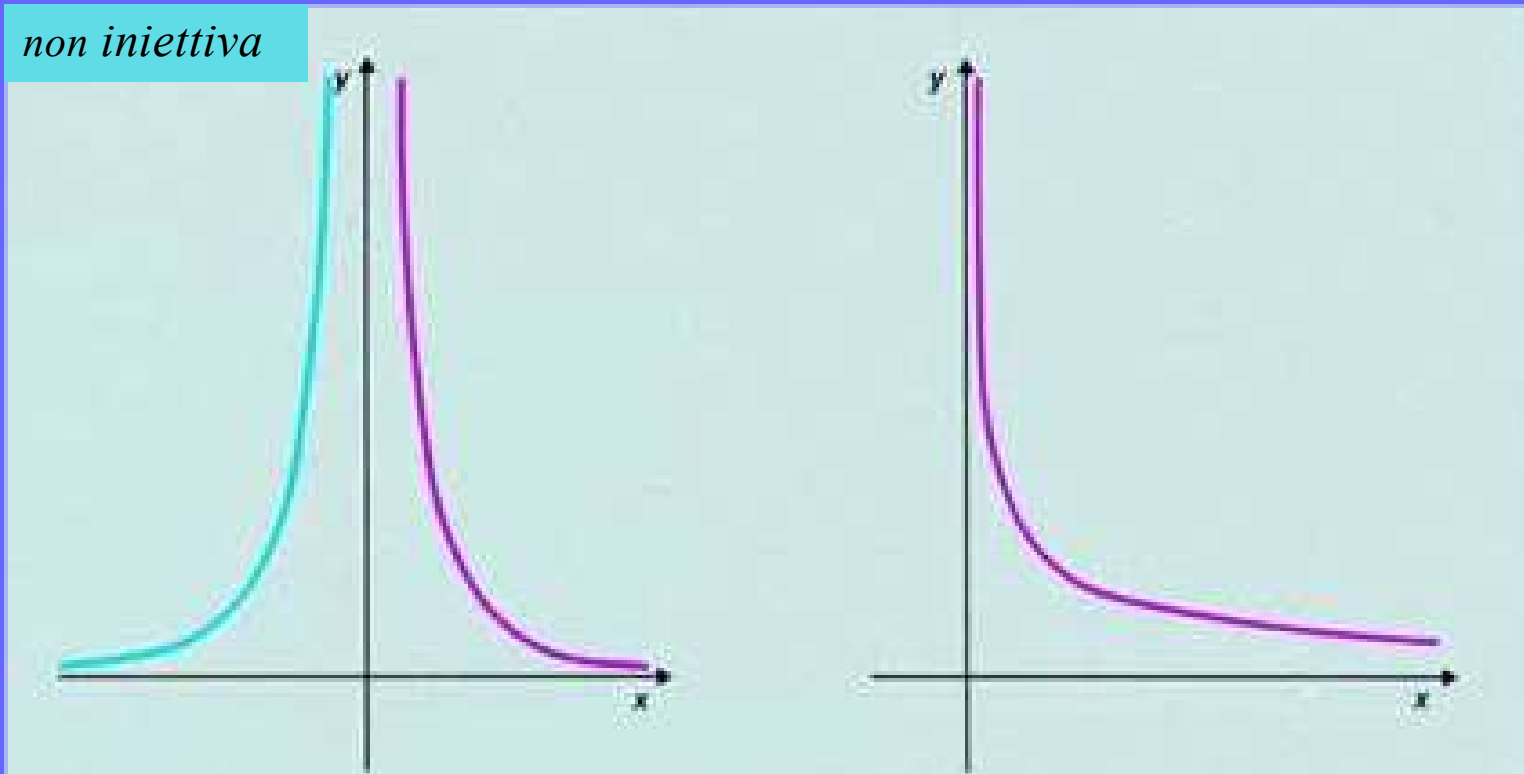


$$y = x^n$$

$$y = \sqrt[n]{x}$$

$n$  pari

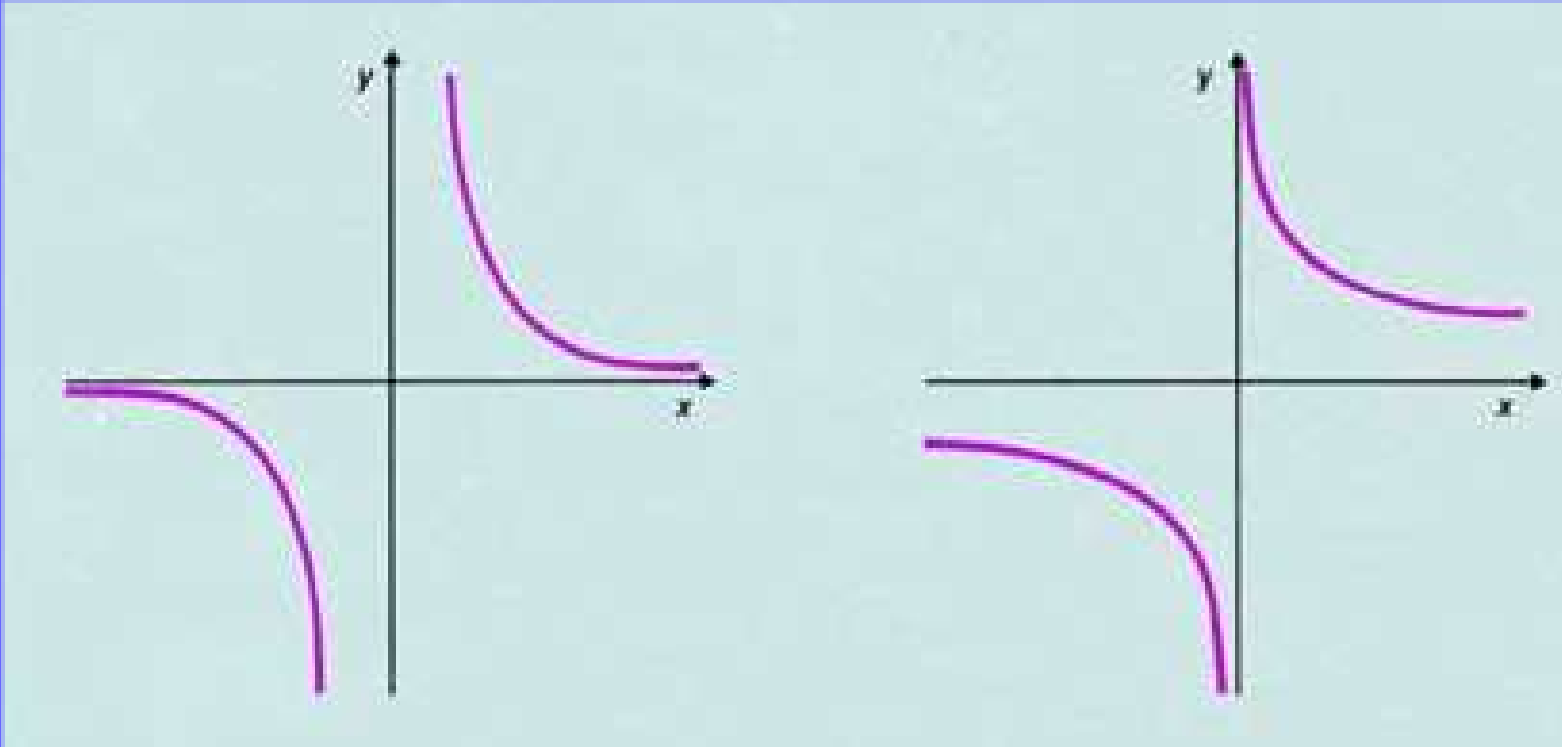
*non iniettiva*



$$y = \frac{1}{x^n}$$

$$y = \frac{1}{\sqrt[n]{x}}$$

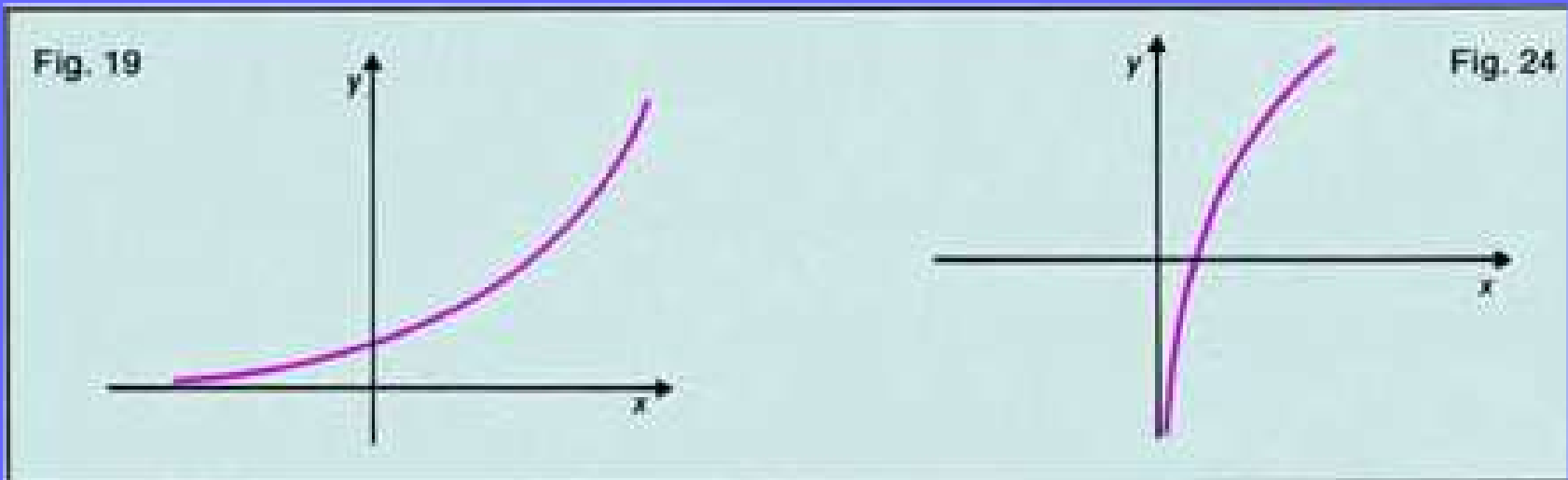
$n$  dispari



$$y = \frac{1}{x^n}$$

$$y = \frac{1}{\sqrt[n]{x}}$$

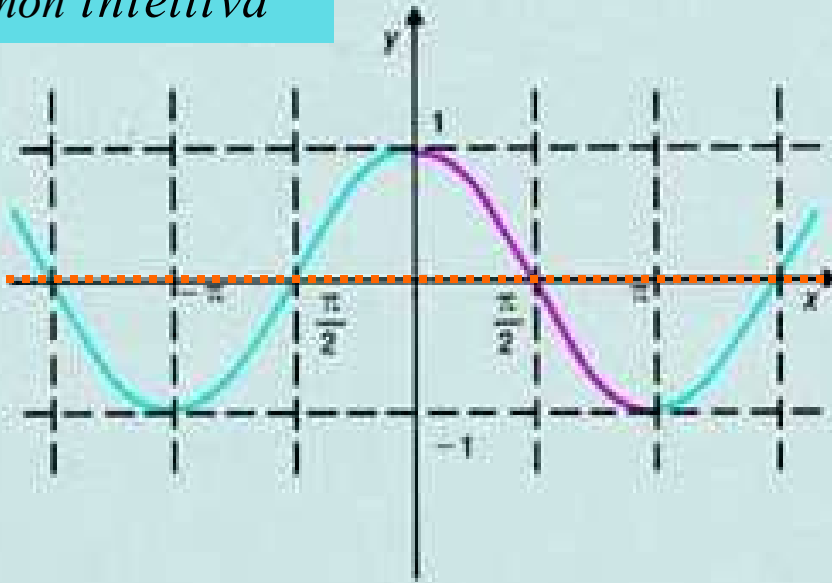
$$a > 1$$



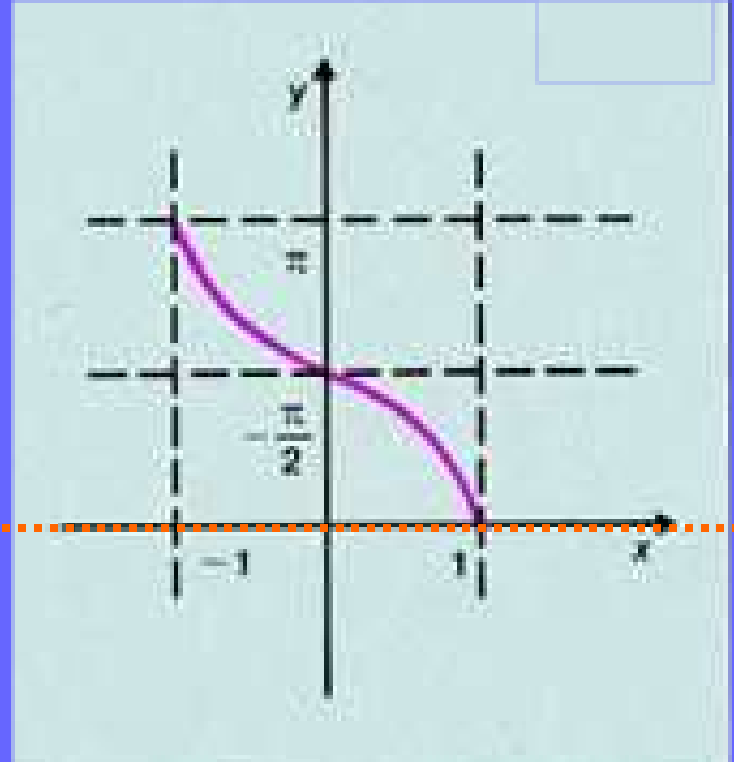
$$y = a^x$$

$$y = \log_a x$$

*non iniettiva*

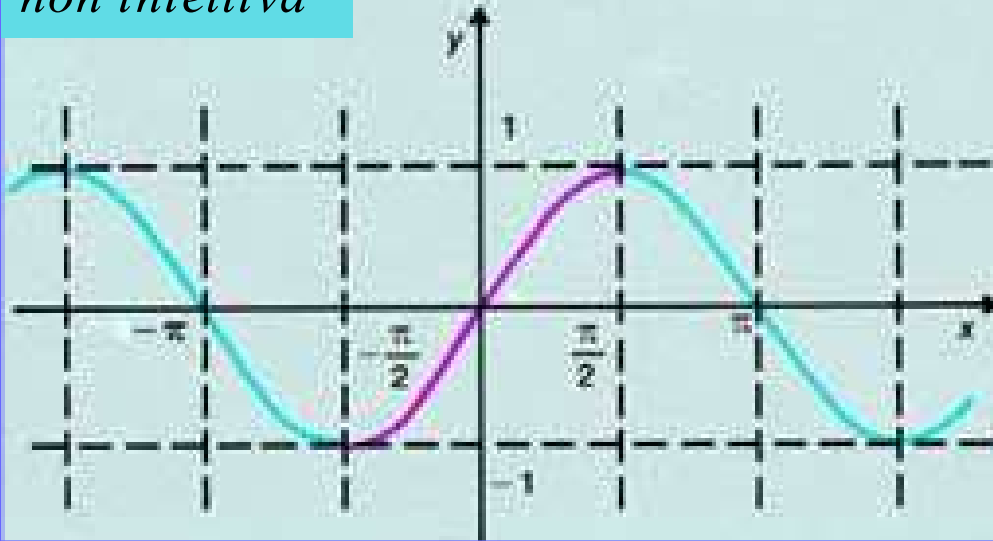


$$y = \cos x$$



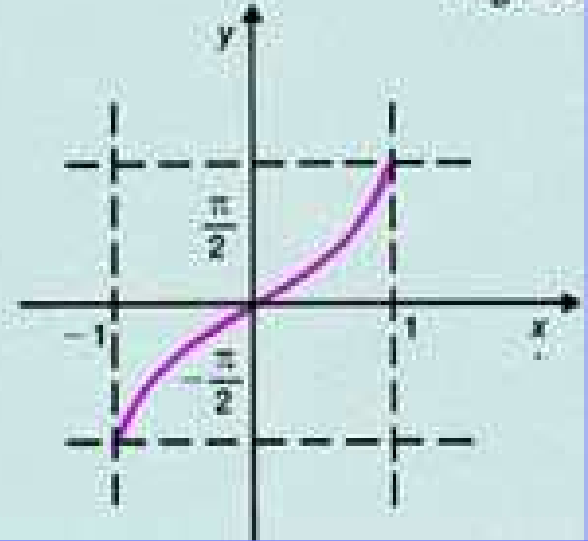
$$y = \arccos x$$

*non iniettiva*



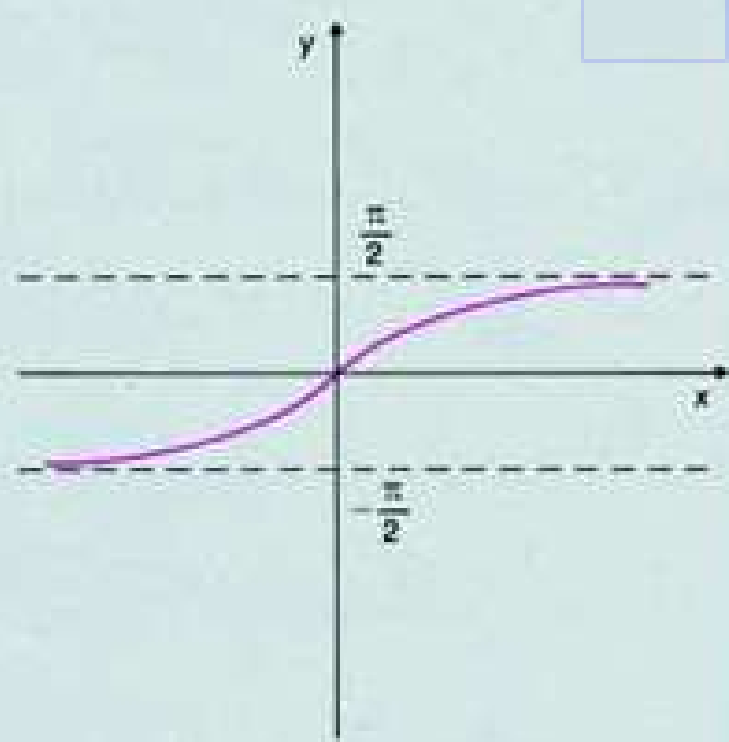
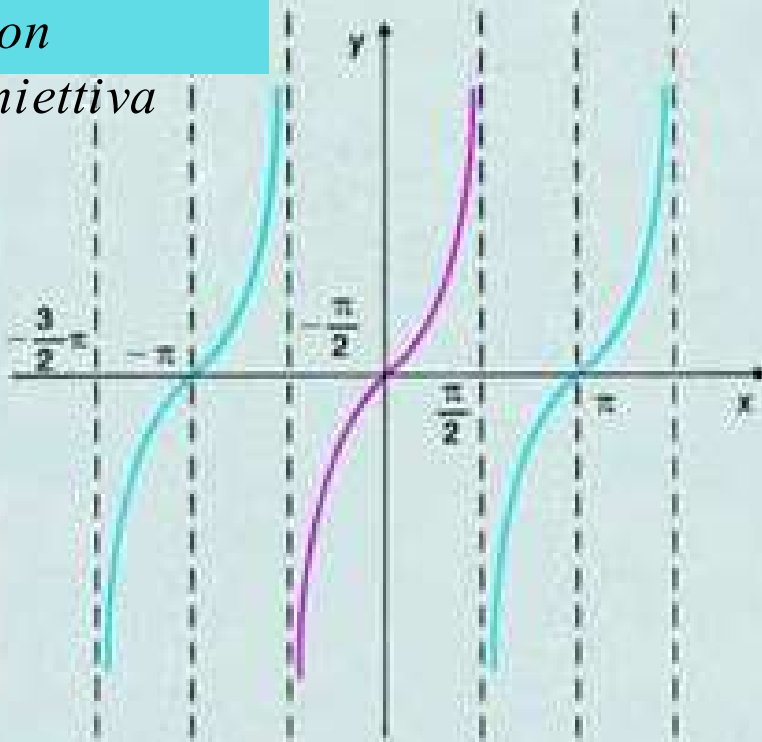
$$y = \text{sen}x$$

Fig. 26



$$y = \text{arcsen}x$$

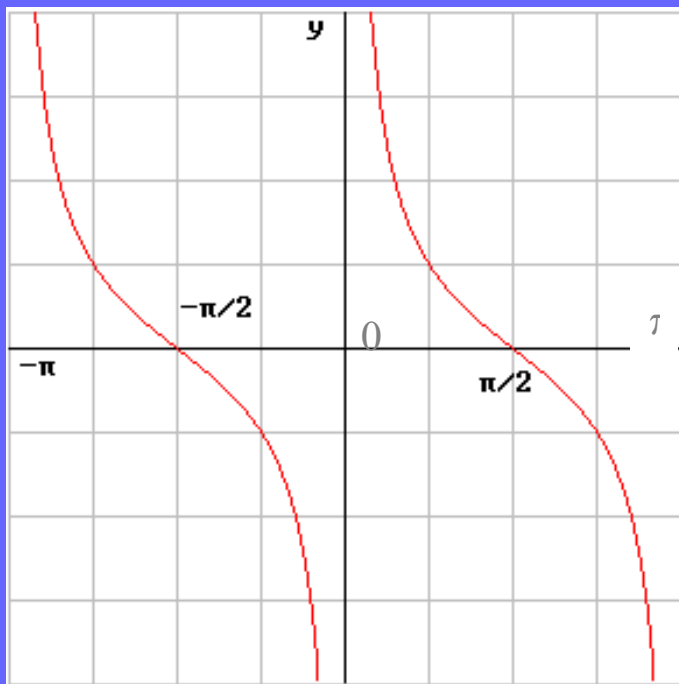
*non  
iniettiva*



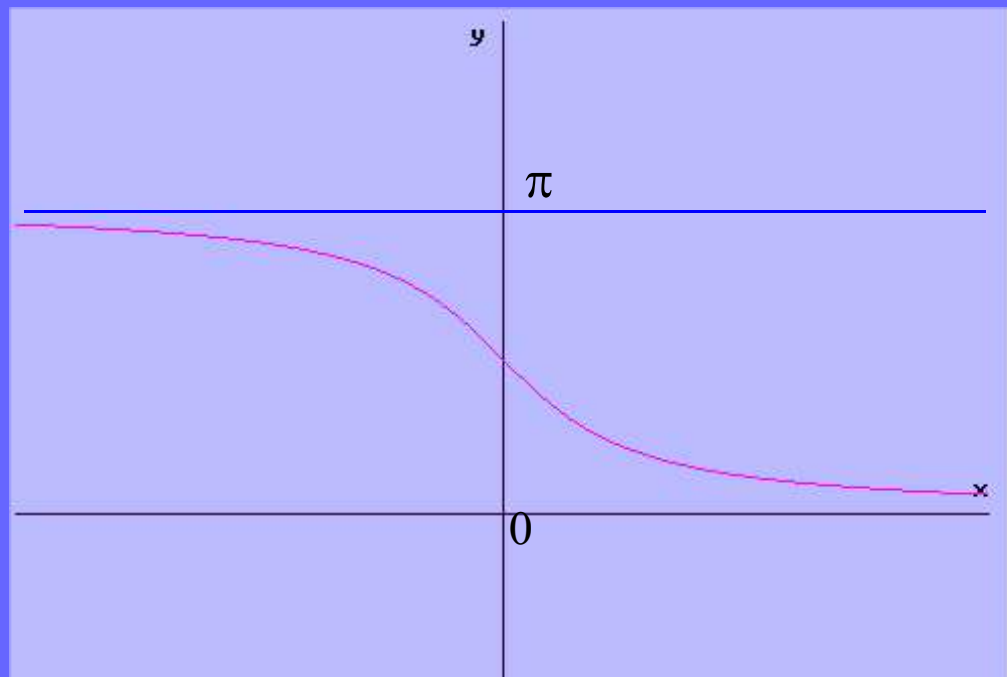
$$y = \operatorname{tg}x$$

$$y = \operatorname{arctg}x$$

*non iniettiva*

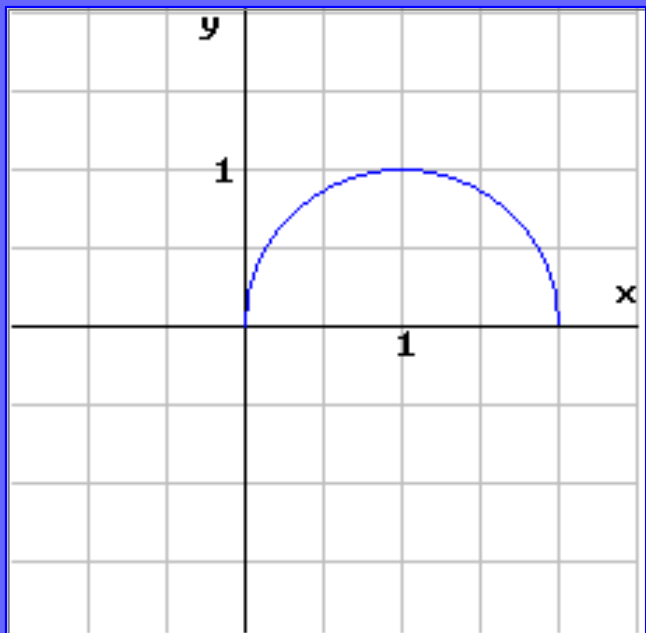


$$y = \text{ctgx}$$



$$y = \text{arcctgx}$$

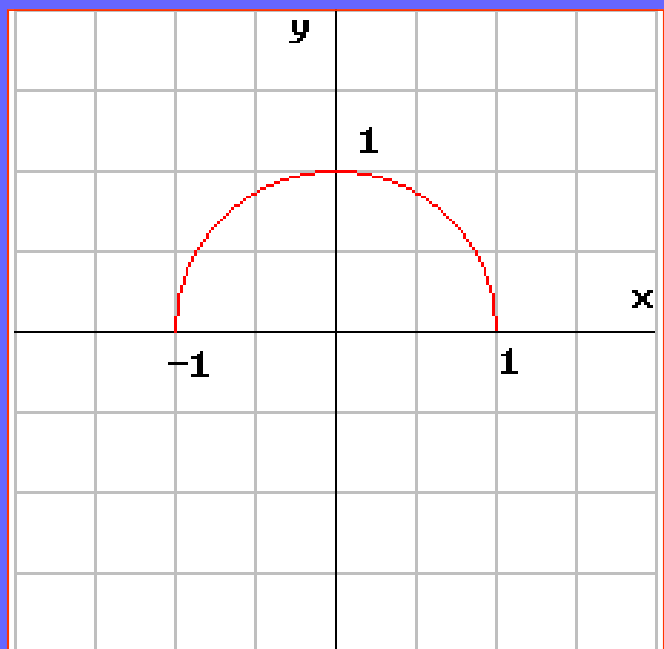
# *Funzioni riconducibili a coniche*



$$y = \sqrt{2x - x^2}$$

$$\begin{cases} y \geq 0 \\ x^2 + y^2 - 2x = 0 \end{cases}$$

*semicirconferenza*



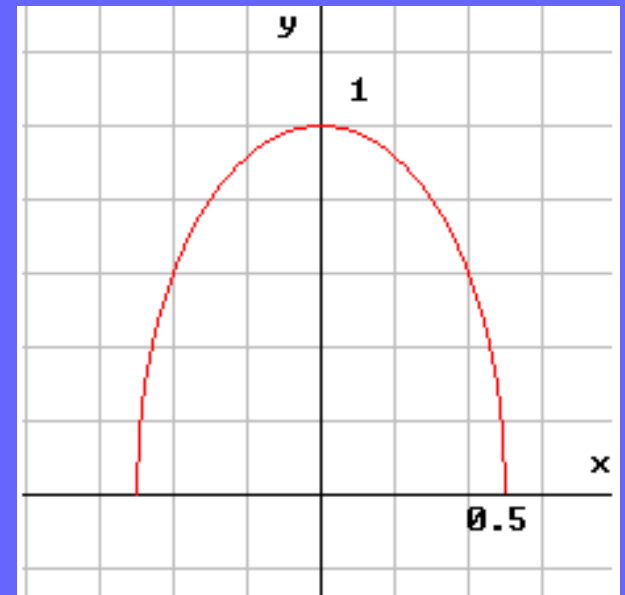
$$y = \sqrt{1 - x^2}$$

$$\begin{cases} y \geq 0 \\ x^2 + y^2 = 1 \end{cases}$$

*semiellisse*

$$y = \sqrt{1 - 4x^2}$$

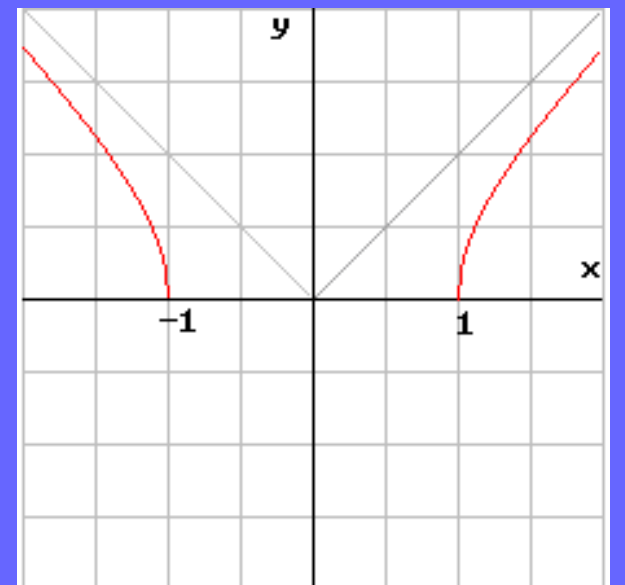
$$\begin{cases} y \geq 0 \\ 4x^2 + y^2 = 1 \end{cases}$$



*Semi-iperbole  
equilatera  
riferita agli  
assi*

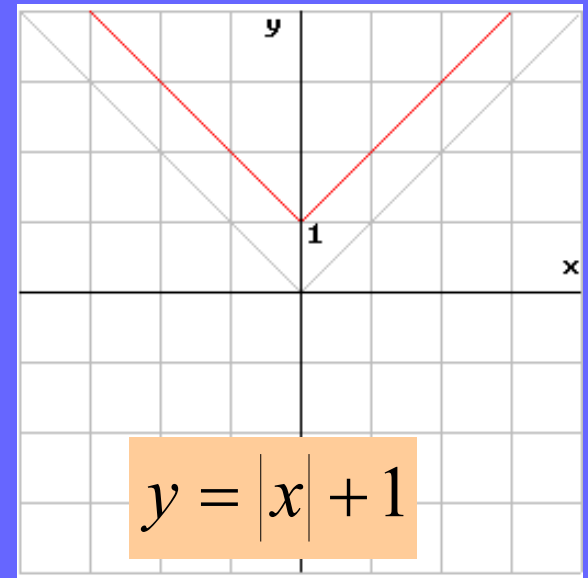
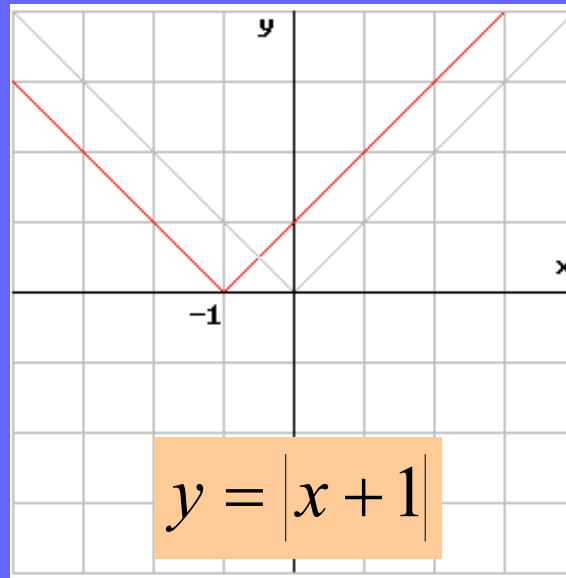
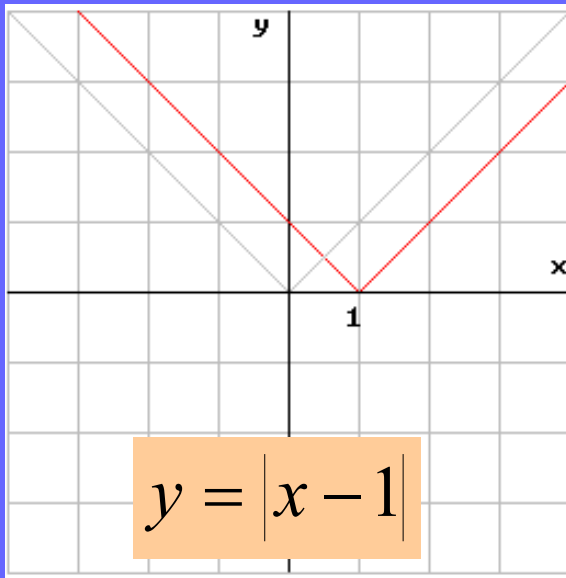
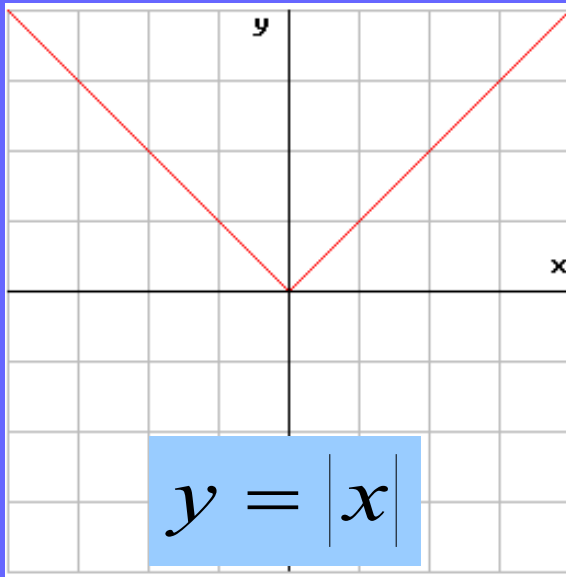
$$y = \sqrt{x^2 - 1}$$

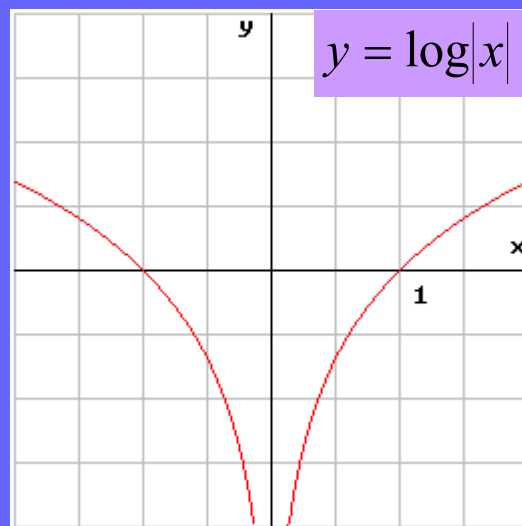
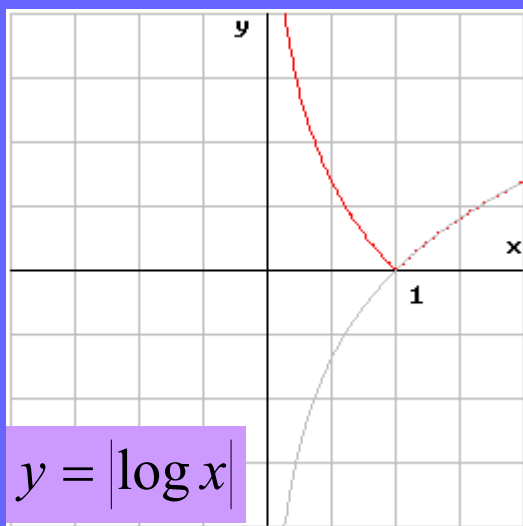
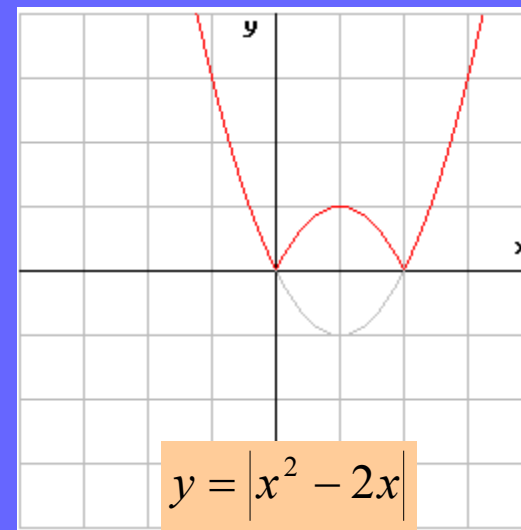
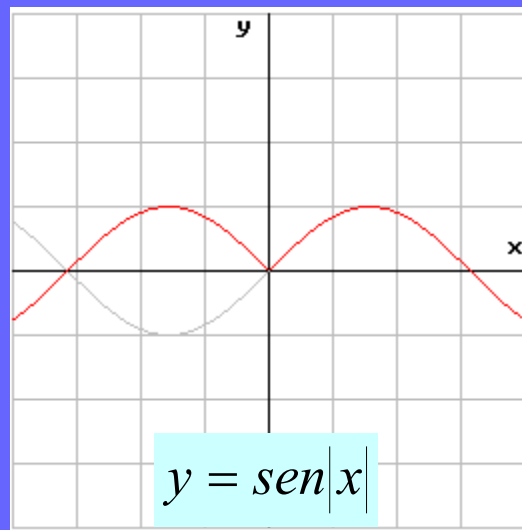
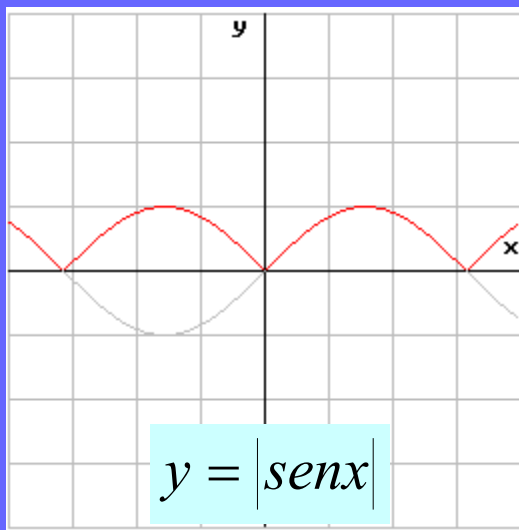
$$\begin{cases} y \geq 0 \\ x^2 - y^2 = 1 \end{cases}$$



# *Funzioni con valore assoluto*

## Bisettrice e valore assoluto





*Modulo della  
funzione o funzione  
del modulo?*